

City of
STAR, IDAHO
RIVER HOUSE PARKING

MAY 2024



Know what's below.
Call before you dig.
 800.342.1585



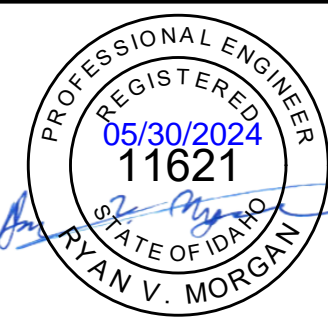
**PROJECT
 LOCATION**

OWNER
 CITY OF STAR
 10769 WEST STATE STREET
 STAR, ID 83669
 CONTACT: MAYOR TREVOR CHADWICK
 PHONE: 208.286.7247
 EMAIL: tchadwick@staridaho.org

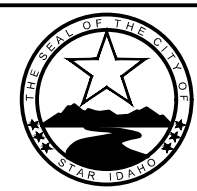
ENGINEER
 CITY OF STAR
 10769 WEST STATE STREET
 STAR, ID 83669
 CONTACT: RYAN MORGAN, PE
 PHONE: 208.286.7247
 EMAIL: rmorgan@staridaho.org



PROJECT SITE



RIVER HOUSE PARKING
 COVER SHEET
 SHEET 1 OF 8



SCALE:	1" = N/A	REVISED
DATE:	05/29/24	
DESIGNED BY:	RVM	

SSWD WATER NOTES

1. CONSTRUCT THE WATER SYSTEM TO CONFORM WITH THE LATEST EDITION OF STANDARDS IN THE "IDAHO RULES FOR PUBLIC DRINKING WATER SYSTEMS" (IDAPA 58.01.08), THE SSWD STANDARD SPECIFICATIONS AND DRAWINGS AND THE LATEST EDITION OF THE I.S.P.W.C. WHERE DISCREPANCIES ARISE BETWEEN THE SSWD AND THE ISPWC, THE MOST RESTRICTIVE REQUIREMENT SHALL APPLY.
2. ALL WATER PIPE AND FITTINGS SHALL COMPLY WITH APPLICABLE PORTIONS OF SECTION 3.1 OF THE SSWD STANDARD SPECIFICATIONS AND DRAWINGS. WATER MAINS SHALL BE AWWA C-900, OR C-909, CLASS 150 PVC.
3. FIVE (5) FEET OF COVER SHALL BE PROVIDED FOR ALL WATER MAINS LOCATED IN A SECTION-LINE ROAD. FIVE FEET OF COVER MAY BE NECESSARY FOR SOME MID-SECTION LINE ROADS; SEE PLANS. FOUR (4) FEET OF COVER SHALL BE PROVIDED FOR ALL OTHER WATER MAINS.
4. THE HORIZONTAL SEPARATION OF WATER AND SEWER MAINS SHALL BE A MINIMUM OF TEN (10) FEET. WHERE IT IS NECESSARY FOR SEWER (SANITARY SEWER, STORM DRAIN, AND IRRIGATION) AND WATER LINES TO CROSS EACH OTHER, AND THE SEWER LINE IS LESS THAN EIGHTEEN (18) INCHES BELOW OR ABOVE WATER MAIN, THE SEWER LINE SHALL BE CLASS 200 ASTM D-2241 PVC PIPE WITH WATER-TIGHT JOINTS, OR EQUAL CONSTRUCTION, FOR A DISTANCE OF TEN (10) FEET ON BOTH SIDES OF WATER LINE IN ACCORDANCE WITH SECTION 542.07 OF THE IDAHO RULES FOR PUBLIC DRINKING WATER SYSTEMS (IDAPA 58.01.08. ONE FULL LENGTH OF BOTH WATER AND SEWER LINES SHALL BE CENTERED AT THE CROSSING POINT SO THAT ALL JOINTS WILL BE AS FAR FROM THE CROSSING AS POSSIBLE. IN LIEU OF CONSTRUCTING OR RECONSTRUCTING THE SEWER TO CONFORM TO WATER MAIN STANDARDS, THE WATER LINE MAY BE SLEEVED IN AWWA C 900 CLASS 200 PVC FOR A DISTANCE OF TEN (10) FEET ON BOTH SIDES OF THE CROSSING.
5. LOCATE SUBSURFACE STORM WATER DISPOSAL FACILITIES (INCLUDING UNLINED PONDS, INFILTRATION BEDS AND DRYWELLS) AT LEAST 25 FEET FROM MAIN WATER LINES. THIS REQUIREMENT DOES NOT APPLY TO CATCH BASINS OR SAND AND GREASE VAULTS.
6. PLACE NO. 12 DIRECT BURIAL WIRE ALONG THE NORTH AND EAST SIDE OF WATER MAINS AND SERVICE LINES, PER STANDARD DRAWING NO. 7.04(W).
7. THE CONTRACTOR SHALL NOTIFY THE SSWD TWO (2) WORKING DAYS BEFORE INITIAL CONSTRUCTION BEGINS AND SHALL ALSO REQUEST INSPECTION OF WATER LINES AND APPURTENANCES TWENTY-FOUR (24) HOURS IN ADVANCE OF BACKFILLING.
8. CONSTRUCT, PRESSURE-TEST, FLUSH AND DISINFECT ALL WATER DISTRIBUTION SYSTEMS IN ACCORDANCE WITH APPLICABLE PORTIONS OF SECTION 3.1 OF THE SSWD STANDARD SPECIFICATIONS AND DRAWINGS.
9. PLACE WATER SERVICE LINES IN A TWO (2) INCH DIAMETER SCHEDULE 80 WATER CLASS PIPE WHEREVER THE SERVICE LINE CROSSES A STORM WATER DISPOSAL FACILITY (I.E. SEEPAGE BEDS, DRAINAGE SWALES).
10. THE CONTRACTOR SHALL BE RESPONSIBLE FOR PROVIDING CONTINUOUS WATER SERVICE TO ALL EXISTING WATER USERS AFFECTED BY CONSTRUCTION.
11. THE CONTRACTOR SHALL BE RESPONSIBLE FOR LOCATING AND MARKING ALL EXISTING SERVICE CONNECTIONS PER STANDARD DRAWING 7.08(W).
12. SECURE AND ANCHOR ALL TEES, PLUGS, CAPS, BENDS, AND OTHER LOCATIONS WHERE UNBALANCED FORCES EXIST BY SUITABLE THRUST BLOCKING AS SHOWN ON STANDARD DRAWING 7.09(W).
13. ONLY PLAN APPROVED BY THE SSWD ENGINEER OR HIS AUTHORIZED REPRESENTATIVE SHALL BE USED BY THE PROJECT CONTRACTOR(S).
14. THE CONTRACTOR SHALL FLOW TEST ALL FIRE HYDRANTS. THE FIRE DEPARTMENT SHALL BE PRESENT FOR FLOW TESTING OF ALL FIRE HYDRANTS.
15. CONTRACTOR SHALL NOTIFY RESIDENCES/ESTABLISHMENTS AT LEAST 24 HOURS PRIOR TO SHUTTING DOWN WATER SERVICE. ALL SHUTDOWNS SHALL BE COORDINATED WITH SSWD.

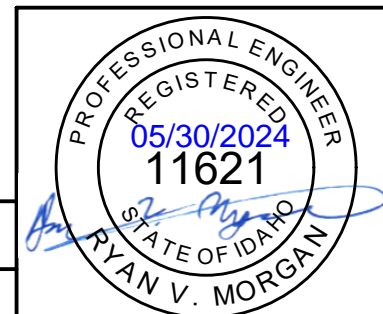
SSWD SEWER NOTES

1. ALL WORK SHALL BE DONE IN ACCORDANCE WITH THE LATEST EDITION OF THE "WASTEWATER RULES" (IDAPA 58.01.16) ISPWC AND THE SUPPLEMENTAL SSWD STANDARD SPECIFICATIONS. WHERE DISCREPANCIES ARISE BETWEEN THE SSWD AND THE ISPWC, THE MOST RESTRICTIVE REQUIREMENT SHALL APPLY.
2. APPROVAL AND ACCEPTANCE OF ALL SEWER CONSTRUCTION WILL BE BY THE SSWD FOR SEWER MAINS AND SERVICE STUBS, AND BY THE PLUMBING BUREAU FOR THE PIPING FROM THE SEWER STUB TO AND INCLUDING PLUMBING INSIDE BUILDINGS. SUCH INSPECTIONS SHALL NOT RELIEVE THE CONTRACTOR FROM THE RESPONSIBILITY OF PERFORMING THE WORK IN AN ACCEPTABLE MANNER IN ACCORDANCE WITH THE APPROVED CONSTRUCTION PLANS AND STANDARD SPECIFICATIONS AND DRAWINGS.
3. ALL SEWER PIPE SHALL BE BELL AND SPIGOT, POLYVINYL CHLORIDE (PVC), SDR 35, ASTM D-3034, UNLESS OTHERWISE SPECIFIED. ALL SEWER PIPE SHALL COMPLY WITH APPLICABLE PORTIONS OF SECTION 4.1 OF THE SSWD STANDARD SPECIFICATIONS AND DRAWINGS.
4. LOCATE SERVICE LINES TO THE POINTS SHOWN ON THE DRAWINGS OR AS MARKED BY THE SURVEYOR/ENGINEER IN THE FIELD. MARK AND CONSTRUCT SERVICE LINES IN ACCORDANCE WITH THE STANDARD DRAWINGS 7.16(S) AND 7.17(S). THE SERVICE MARKER SHALL BE IN PLACE FOR THE FINAL INSPECTION.
5. THE SSWD WILL INSPECT ALL PUBLIC SEWER CONSTRUCTION WHETHER WITHIN PUBLIC RIGHT-OF-WAY OR EASEMENT. THE CONTRACTOR WILL NOTIFY THE SSWD FORTY-EIGHT (48) HOURS PRIOR TO START OF CONSTRUCTION, AND AGAIN TWENTY-FOUR (24) HOURS PRIOR TO POURING CONCRETE COLLARS.
6. MAINTAIN GROUNDWATER LEVELS ONE FOOT (1') OR MORE BELOW THE PIPE INVERT, PER ISPWC, DURING PIPE LAYING AND PIPE JOINING OPERATIONS AND WHILE MAKING SEWER TAPS. CLEAN AND RESTORE TO THEIR ORIGINAL STATE ANY DITCHES AND STORM DRAIN FACILITIES THAT ARE SILTED DUE TO THE CONTRACTOR'S DEWATERING EFFORTS. BEDDING AND PIPE ZONE MATERIAL SHALL BE THREE-QUARTER INCH (3/4") ROCK CHIPS UNLESS OTHERWISE APPROVED.
7. INSTALL SEWER SERVICE LINES PRIOR TO STREET IMPROVEMENTS.
8. CONSTRUCT SANITARY SEWER MANHOLES IN ACCORDANCE WITH SECTION 4.3 OF THE STANDARD SPECIFICATIONS, AND DRAWINGS 7.21(S), 7.22(S), 7.24(S), 7.25(S), 7.26(S) AS APPLICABLE.
9. THE CONTRACTOR SHALL TEST ALL SEWER LINES IN ACCORDANCE WITH SECTION 4.1.C OF THE SSWD STANDARD SPECIFICATIONS AND DRAWINGS AND SECTIONS 501.3.4 AND 502.3.12 OF THE ISPWC.
10. PLACE SEWER SERVICE LINES IN A SIX (6) INCH DIAMETER WATER CLASS PIPE WHEREVER THE SERVICE LINE CROSSES A STORMWATER DISPOSAL FACILITY (I.E., SEEPAGE BEDS, DRAINAGE SWALES).
11. THE SEPARATION OF WATER AND SEWER MAINS SHALL BE PER WATER NOTE # 4.
12. WHEN COVER OVER A SEWER PIPE IS LESS THAN THREE (3) FEET FROM TOP OF PIPE TO SUBGRADE OR TOP OF PIPE TO NATURAL GROUND, USE "CLASS 200 WATER PRESSURE PIPE", ASTM D 2241, SDR 21, INCLUDING SERVICE LINES AND FITTINGS.
13. ONLY PLANS APPROVED BY THE SSWD ENGINEER SHALL BE USED BY THE PROJECT CONTRACTOR.
14. THE CONTRACTOR SHALL CONDUCT A TELEVISION INSPECTION UPON COMPLETION OF THE SEWER LINES AND PROVIDE A VIDEOTAPE OF THE INSPECTION PRIOR TO FINAL ACCEPTANCE OF THE SEWER, PER SECTION 4.3 OF THE STANDARD SPECIFICATIONS.
15. THE CONTRACTOR'S SURVEYOR SHALL VERIFY EACH MANHOLE INVERT ELEVATION DURING PLACEMENT. THE SURVEYOR SHALL ALSO VERIFY THE PIPE INVERT ELEVATION 100 FEET FROM EACH MANHOLE TO CONFIRM PIPE GRADE.
16. THE CONTRACTOR SHALL FURNISH MANHOLES WITH MANHOLE IDENTIFICATION NUMBERS LABELED ON THE INSIDE.

SSWD GENERAL NOTES

1. ALL WORK SHALL BE DONE IN ACCORDANCE WITH THE SPECIFICATIONS, THE SSWD STANDARD SPECIFICATIONS AND DRAWINGS, THE CITY OF STAR, THE REQUIREMENTS OF THE ADA COUNTY HIGHWAY DISTRICT, AND THE ISPWC LATEST EDITION.
2. ALL CONTRACTORS, SUBCONTRACTORS AND/OR UTILITY CONTRACTORS SHALL ATTEND A PRE-CONSTRUCTION CONFERENCE A MINIMUM OF THREE (3) WORKING DAYS PRIOR TO START OF WORK.
3. TAKE ALL LOT DIMENSIONS, EASEMENTS AND CERTAIN OFF-SITE EASEMENTS FROM THE CONSTRUCTION DRAWINGS TO WHICH THESE PLANS ARE ATTACHED.
4. THE CONTRACTOR SHALL MAINTAIN ALL EXISTING DRAINAGE AND IRRIGATION FACILITIES WITHIN THE CONSTRUCTION AREA UNTIL THE DRAINAGE AND IRRIGATION IMPROVEMENTS ARE IN PLACE AND FUNCTIONING.
5. ALL CONTRACTORS WORKING WITHIN THE PROJECT BOUNDARIES ARE RESPONSIBLE FOR COMPLIANCE WITH ALL APPLICABLE SAFETY LAWS OF ANY JURISDICTIONAL BODY. THE CONTRACTOR SHALL BE RESPONSIBLE FOR ALL BARRICADES, SAFETY DEVICES AND CONTROL OF TRAFFIC WITHIN AND AROUND THE CONSTRUCTION AREA.
6. ALL MATERIAL FURNISHED ON OR FOR THE PROJECT MUST MEET THE MINIMUM REQUIREMENTS OF THE APPROVING AGENCIES OR AS SET FORTH HEREIN, WHICHEVER IS MORE RESTRICTIVE. CONTRACTORS MUST FURNISH PROOF THAT ALL MATERIALS INSTALLED ON THIS PROJECT MEET THE REQUIREMENTS AT THE REQUEST OF THE APPROVING AGENCY AND/OR THE DESIGN ENGINEER.
7. THE LOCATIONS OF EXISTING UNDERGROUND UTILITIES ARE SHOWN IN AN APPROXIMATE WAY ONLY. THE CONTRACTOR SHALL DETERMINE THE EXACT LOCATION OF ALL EXISTING UTILITIES BEFORE COMMENCING WORK. THE CONTRACTOR ASSUMES ALL RESPONSIBILITY FOR ANY AND ALL DAMAGES CAUSED BY HIS FAILURE TO EXACTLY LOCATE AND PRESERVE ANY AND ALL UNDERGROUND UTILITIES.
8. WORK SUBJECT TO APPROVAL BY ANY POLITICAL SUBDIVISION OR AGENCY MUST BE APPROVED PRIOR TO (A) BACKFILLING TRENCHES FOR PIPE; (B) PLACING OF AGGREGATE BASE; (C) PLACING OF CONCRETE; (D) PLACING OF ASPHALT PAVING. WORK DONE WITHOUT SUCH APPROVAL DOES NOT RELIEVE THE CONTRACTOR FROM THE RESPONSIBILITY OF PERFORMING THE WORK IN AN ACCEPTABLE MANNER.
9. THE CONTRACTOR SHALL KEEP ON SITE AT ALL TIMES A COPY OF THE APPROVED CONSTRUCTION PLANS ON WHICH IS RECORDED THE ACTUAL LOCATIONS OF THE CONSTRUCTED PIPE LINE AND ANY OTHER UTILITIES ENCOUNTERED. THE CONTRACTOR SHALL PROVIDE THESE LOCATIONS TO THE DESIGN ENGINEER FOR USE IN THE PRODUCTION OF RECORD DRAWINGS PER SECTION 1.2.J.3 PRIOR TO FINAL APPROVAL OF THE PIPE LINE INSTALLATION.
10. THE CONTRACTOR SHALL PAINT FIRE HYDRANT ID NUMBER ASSIGNED BY THE FIRE DEPARTMENT USING A 3-INCH STENCIL WITH WHITE PAINT APPROVED BY THE FIRE DEPARTMENT AND AT A LOCATION ON THE FIRE HYDRANT APPROVED BY THE FIRE DEPARTMENT

△ POTABLE NON-POTABLE WATER LINE CROSSING, SEE WATER NOTE 4



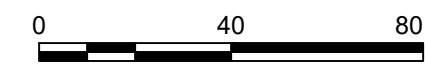
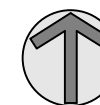
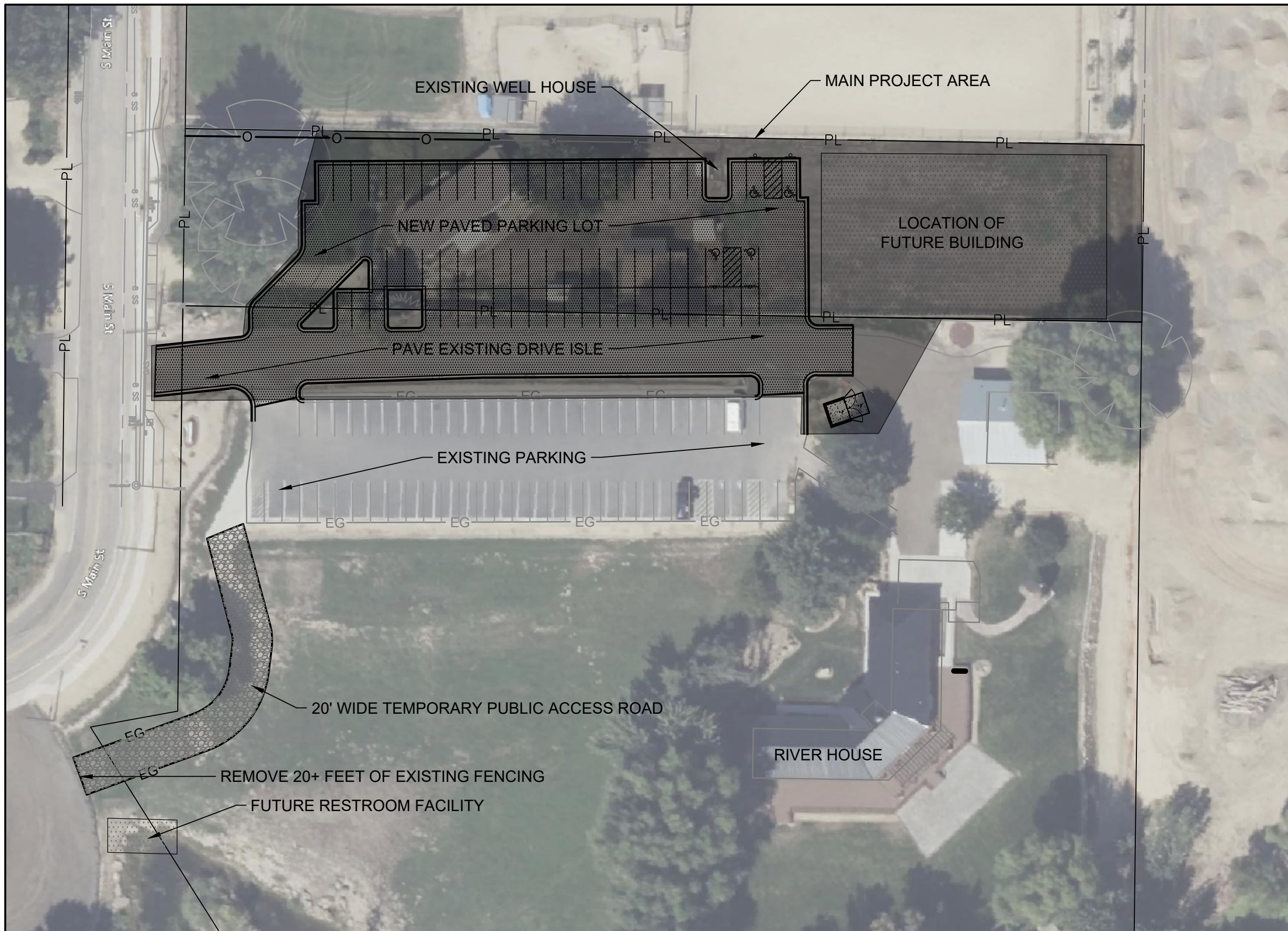
RIVER HOUSE PARKING

COVER SHEET
SHEET 2 OF 8



SCALE:	1" = N/A
DATE:	05/29/24
DESIGNED BY:	RVM

REVISED



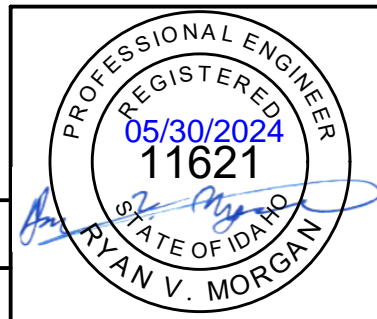
GENERAL SHEET NOTES

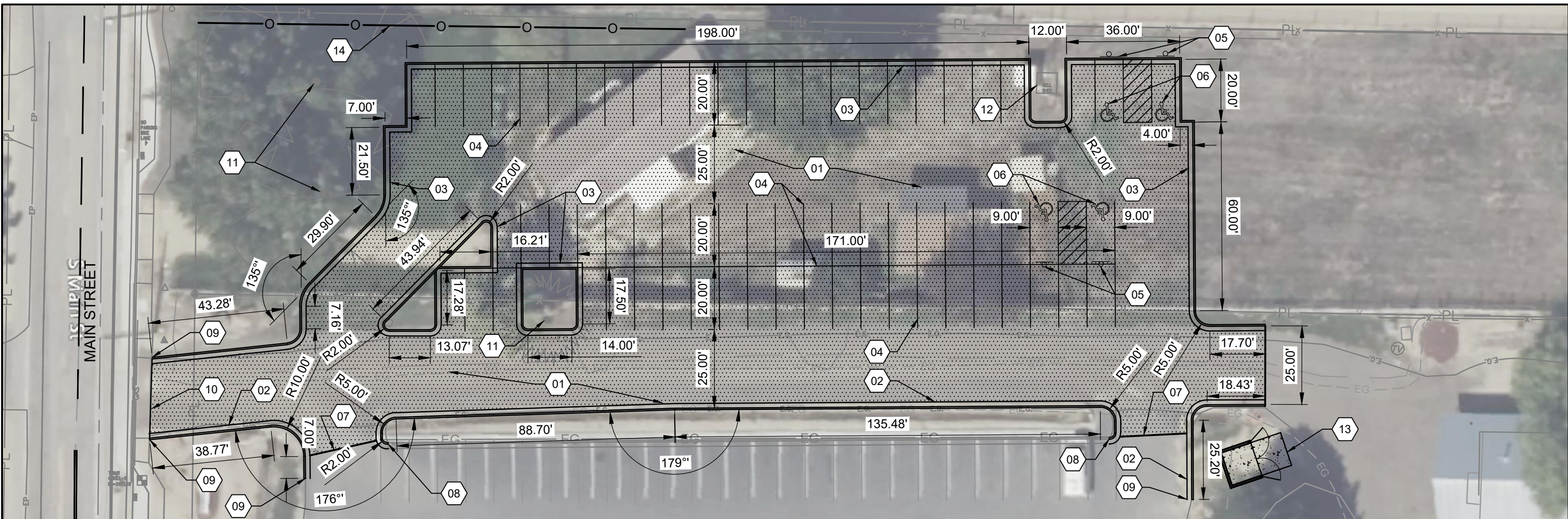
1. EXISTING BASE MAP MAY CONTAIN ERRORS. PRIOR TO CONSTRUCTION CONTRACTOR SHALL FIELD VERIFY EXISTING CONDITIONS.
2. THE CONTRACTOR IS RESPONSIBLE FOR ALL WORK, MATERIAL, AND LABOR TO SATISFY A COMPLETE AND WORKING SYSTEM WHETHER SPECIFIED OR IMPLIED.
3. THE CONTRACTOR SHALL SECURE ALL PERMITS OR APPLICATIONS AND PAY ANY AND ALL FEES AS REQUIRED.
4. CONTRACTOR SHALL CONSTRUCT TEMPORARY ALL WEATHER ACCESS ROAD, PER ISPWC STANDARDS, FROM SOUTH EDGE OF PROPERTY TO EXISTING PARKING LOT. CONTRACTOR IS RESPONSIBLE FOR COMPLETE REMOVAL AND OF ACCESS ROAD AND RESTORATION OF AREA AFTER CONSTRUCTION OF NEW PARKING LOT IS COMPLETE.

RIVER HOUSE PARKING
OVERALL SITE PLAN
 SHEET 3 OF 8



SCALE:	1" = 50'	REVISED
DATE:	05/29/24	
DESIGNED BY:	RVM	



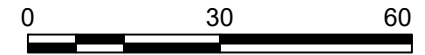
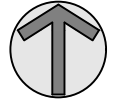


GENERAL SHEET NOTES

1. EXISTING BASE MAP MAY CONTAIN ERRORS. PRIOR TO CONSTRUCTION CONTRACTOR SHALL FIELD VERIFY EXISTING CONDITIONS.
2. THE CONTRACTOR IS RESPONSIBLE FOR ALL WORK, MATERIAL, AND LABOR TO SATISFY A COMPLETE AND WORKING SYSTEM WHETHER SPECIFIED OR IMPLIED.
3. THE CONTRACTOR SHALL SECURE ALL PERMITS OR APPLICATIONS AND PAY ANY AND ALL FEES AS REQUIRED.
4. ALL DIMENSIONS ARE TO FACE OF CURB UNLESS OTHERWISE NOTED

SHEET KEYNOTES

- | | |
|---|---|
| <p>01 ASPHALT PAVEMENT PARKING LOT, 2.5 " A.C ON 4" OF 3/4-INCH MINUS ON 12" PIT RUN.</p> <p>02 STANDARD CURB AND GUTTER, RE: ISPWC SD-701</p> <p>03 REVERSE CURB AND OUTFLOW GUTTER SIMILAR TO ISPWC SD-701</p> <p>04 PAVEMENT MARKINGS, 4" WHITE STRIPE, WATERBORNE</p> <p>05 HANDICAP SIGN, RE: ISPWC SD-1130</p> <p>06 HANDICAP PAVEMENT MARKING</p> <p>07 SAWCUT EXISTING PAVEMENT AND PAVE FLUSH TO ASPHALT</p> <p>08 CONNECT TO EXISTING CURB AND GUTTER</p> | <p>09 CURB TERMINUS, RE: ISPWC SD-707</p> <p>10 PAVE TO EXISTING SIDEWALK</p> <p>11 PROTECT EXISTING TREE, CONTRACTOR TO MINIMIZE DAMAGE TO EXISTING TREE LIMBS AND ROOTS DURING CONSTRUCTION.</p> <p>12 PROTECT EXISTING PUMP HOUSE, PUMP AND ELECTRICAL SYSTEM</p> <p>13 NEW TRASH ENCLOSURE, SEE ADD ALT 2 ON SHEET 5 OF 5</p> <p>14 CONSTRUCT FENCE, EXTEND FROM EXISTING FENCE TO PROPERTY, STEP LAST TWO SEGMENTS TO 3 FOOT SECTIONS. MATCH EXISTING STYLE.</p> |
|---|---|

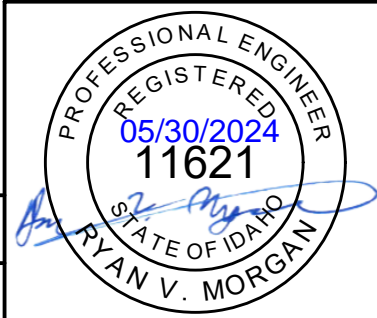


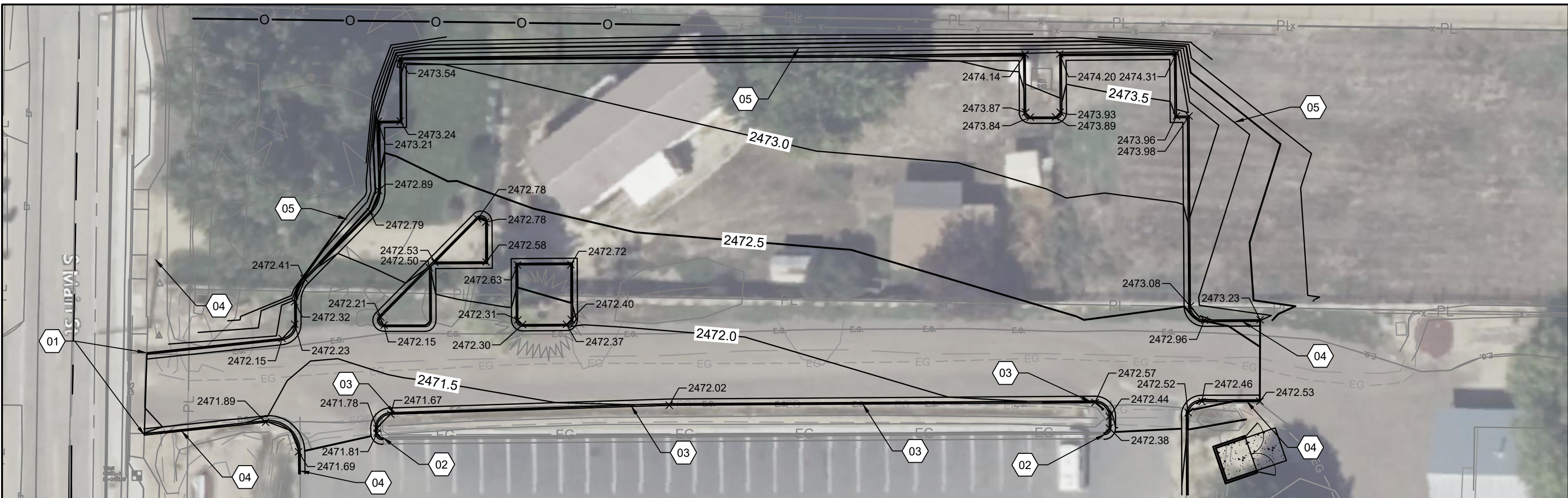
RIVER HOUSE PARKING
HORIZONTAL CONTROL PLAN
 SHEET 4 OF 8



SCALE: 1" = 30'
 DATE: 05/29/24
 DESIGNED BY: RVM

REVISED





GENERAL SHEET NOTES

1. EXISTING BASE MAP MAY CONTAIN ERRORS. PRIOR TO CONSTRUCTION CONTRACTOR SHALL FIELD VERIFY EXISTING CONDITIONS.
2. THE CONTRACTOR IS RESPONSIBLE FOR ALL WORK, MATERIAL, AND LABOR TO SATISFY A COMPLETE AND WORKING SYSTEM WHETHER SPECIFIED OR IMPLIED.
3. WORK BY OTHERS AROUND THE SITE MAY CURRENTLY BE UNDER CONSTRUCTION OR RECENTLY COMPLETED DURING CONSTRUCTION OF PAVILION PARK. CONTRACTOR SHALL COORDINATE WITH THOSE WORKING AROUND HIM DURING CONSTRUCTION.
4. ALL GRADES ARE TOP BACK OF CURB UNLESS OTHERWISE SPECIFIED.

SHEET KEYNOTES

- 01 MATCH EXISTING CONCRETE ELEVATION.
- 02 REMOVE CURB TAPER AND MATCH TOP BACK OF CURB AT TOP END OF TAPER.
- 03 CONSTRUCT CURB DRAIN PER ISPWC SD-715.
- 04 CONSTRUCT CURB TERMINUS PER ISPWC SD-707.
- 05 TRANSITION TO EXISTING GROUND AT MAX 4:1 SLOPE.



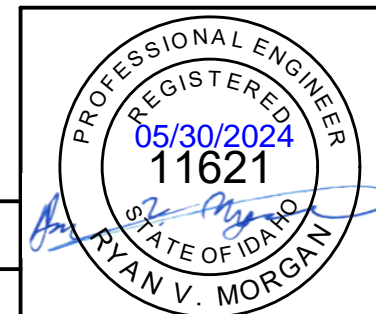
RIVER HOUSE PARKING

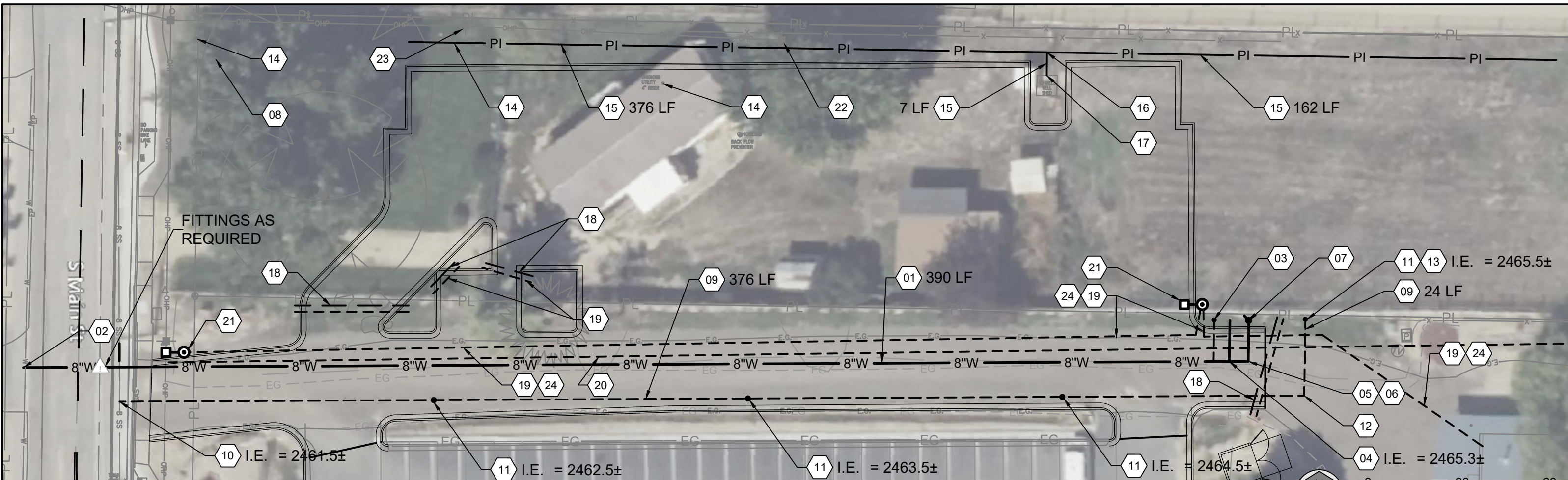
GRADING PLAN
SHEET 5 OF 8



SCALE:	1" = 30'
DATE:	05/29/24
DESIGNED BY:	RVM

REVISED





GENERAL SHEET NOTES

1. EXISTING BASE MAP MAY CONTAIN ERRORS. PRIOR TO CONSTRUCTION CONTRACTOR SHALL FIELD VERIFY EXISTING CONDITIONS.
2. THE CONTRACTOR IS RESPONSIBLE FOR ALL WORK, MATERIAL, AND LABOR TO SATISFY A COMPLETE AND WORKING SYSTEM WHETHER SPECIFIED OR IMPLIED.
3. THE CONTRACTOR SHALL SECURE ALL PERMITS OR APPLICATIONS AND PAY ANY AND ALL FEES AS REQUIRED.
4. CONTRACTOR SHALL VERIFY DEPTH AND LOCATION OF EXISTING UTILITIES PRIOR TO THE START OF CONSTRUCTION.

SHEET KEYNOTES

- | | | |
|---|--|---|
| <p>01 INSTALL 8-INCH WATER MAIN.</p> <p>02 HOT TAP EXISTING 8-INCH WATER MAIN WITH 8-INCH ON 8-INCH WATER TAP.</p> <p>03 INSTALL 2-INCH SERVICE LINE, METER PIT AND SETTER PER SSWD STANDARDS.</p> <p>04 INTALL 8 X 6 TEE AND 6-INCH VALVE FOR FUTURE FIRE SPRINKLER LINE, CAP AND MARK LOCATION OF STUB.</p> <p>05 INSTALL 8-INCH 90 DEGREE ELBOW.</p> <p>06 INSTALL 8 X 6 REDUCER.</p> <p>07 INSTALL FIRE HYDRANT PER SSWD STANDARDS, INCLUDES ALL VALVES AND FITTINGS.</p> <p>08 CAP AND ABANDON EXISTING WATER SERVICE LINE. INSTALL CORP STOP AND CAP AT RIGHT OF WAY.</p> <p>09 INSTALL 6 INCH SANITARY SEWER SERVICE LINE AT 1% SLOPE.</p> | <p>10 CONNECT 6-INCH SEWER SERVICE TO EXISTING 8-INCH SEWER MAIN WITH TYPE C CONNECTION.</p> <p>11 INSTALL 4" SANITARY SEWER SERVICE CLEANOUT PER SSWD STANDARDS.</p> <p>12 INSTALL 6-INCH 90 DEGREE ELBOW</p> <p>13 CAP AND MARK END OF SEWER SERVICE LINE.</p> <p>14 ABANDON/REMOVE EXISTING SEWER SERVICE LINE. CAP AND PLUG AT RIGHT OF WAY.</p> <p>15 INSTALL 2-INCH PRESSURE IRRIGATION LINE. CAP AND MARK LINE AT NORTH AND SOUTH END.</p> <p>16 INSTALL 2-INCH PI TEE</p> <p>17 STUB PI LINE ADJACENT TO BUILDING, OWNER WILL CONNECT TO EXISTING WELL</p> | <p>18 INSTALL 3-INCH IRRIGATION SLEEVE.</p> <p>19 INSTALL 1-INCH POWER CONDUIT FOR FUTURE POWER LINES.</p> <p>20 INSTALL 4-INCH POWER CONDUIT FOR IDAHO POWER SERVICE. COORDINATE WITH IDAHO POWER.</p> <p>21 INSTALL STREET LIGHT, HEAD - U.S. ARCHITECTURAL LIGHTING DSS20 VLED-III 48 525MA NW 120 XPS RAL-9005-T PC120V POLE - SUN VALLEY 1030T-16FT-PT27 BASE - RE: ISPWC SD-1109, 25-30 FOOT HEIGHT. INSTALL ALL WEATHER OUTLET ON POLE.</p> <p>22 REMOVE EXISTING UTILITY POLE.</p> <p>23 POLE TO BE REMOVED BY OTHERS, COORDINATE WITH IDAHO POWER.</p> <p>24 INSTALL 3 #12 AWG FOR LIGHT POLE INSIDE CONDUIT WITH 20 AMP BREAKER. CONNECT TO EXISTING BREAKER BOX LOCATED INSIDE BUILDING.</p> |
|---|--|---|



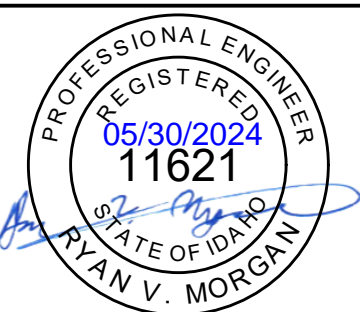
RIVER HOUSE PARKING

UTILITY PLAN
SHEET 6 OF 8



SCALE:	1" = 30'
DATE:	05/29/24
DESIGNED BY:	RVM

REVISED



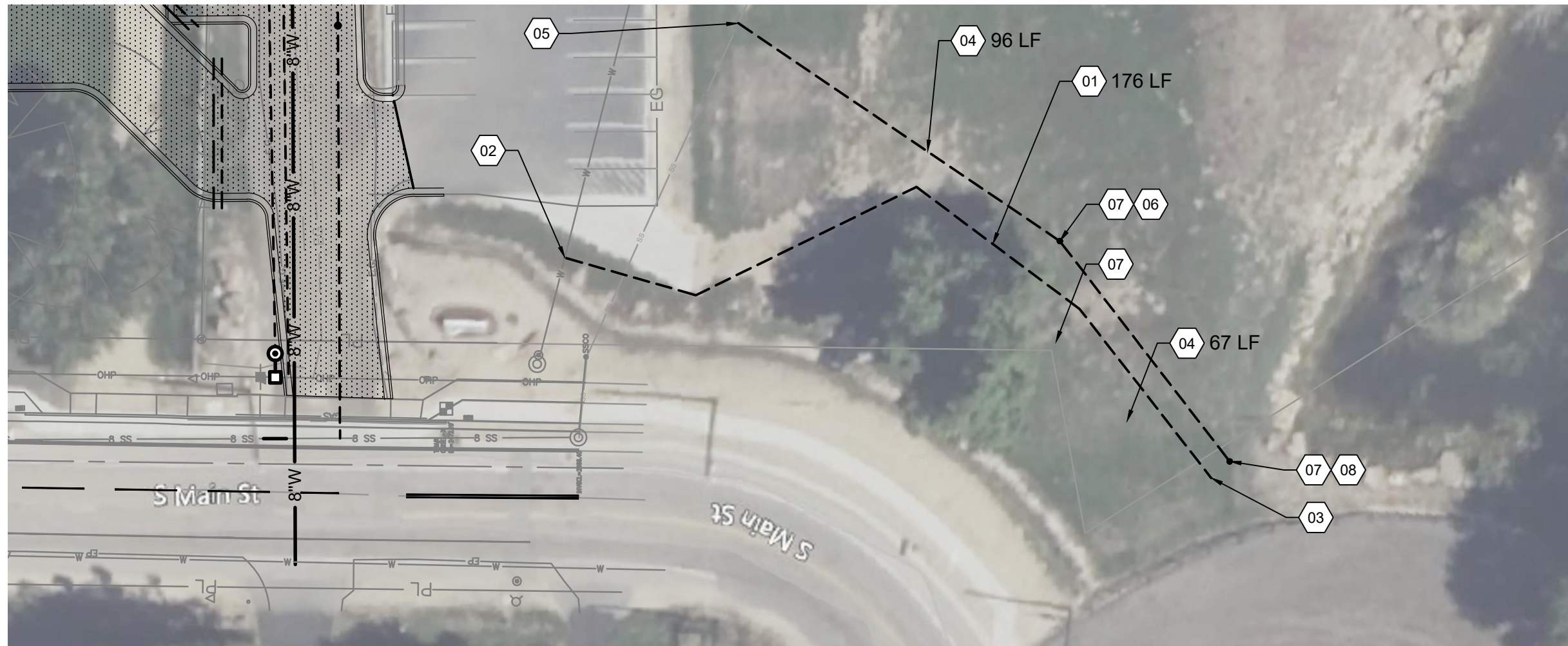


GENERAL SHEET NOTES

1. EXISTING BASE MAP MAY CONTAIN ERRORS. PRIOR TO CONSTRUCTION CONTRACTOR SHALL FIELD VERIFY EXISTING CONDITIONS.
2. THE CONTRACTOR IS RESPONSIBLE FOR ALL WORK, MATERIAL, AND LABOR TO SATISFY A COMPLETE AND WORKING SYSTEM WHETHER SPECIFIED OR IMPLIED.
3. THE CONTRACTOR SHALL SECURE ALL PERMITS OR APPLICATIONS AND PAY ANY AND ALL FEES AS REQUIRED.
4. CONTRACTOR SHALL PERFORM WORK BETWEEN 7:00 AM TO 6:00 PM MONDAY THROUGH THURSDAY, AND SHALL PROVIDE OWNER 72 HOURS NOTICE PRIOR TO STARTING WORK. AT NO TIME SHALL THE CONNECT TO THE RIVER HOUSE BE INTERRUPTED DURING WEEKEND HOURS.

SHEET KEYNOTES

- 01 INSTALL 1.5-INCH WATER SERVICE LINE.
- 02 CONNECT TO EXISTING 1-INCH WATER SERVICE LINE, FITTINGS AS REQUIRED.
- 03 CAP AND MARK END OF WATER SERVICE
- 04 INSTALL 4-INCH SEWER SERVICE LINE SLOPE 2%.
- 05 CONNECT TO EXISTING 4-INCH SEWER SERVICE LINE, FITTINGS AS REQUIRED.
- 06 INSTALL 4-INCH 11.25 DEGREE ELBOW.
- 07 INSTALL 4" SANITARY SEWER SERVICE CLEANOUT PER SSWD STANDARDS.
- 08 CAP AND MARK END OF SEWER SERVICE LINE.



A1

ADD ALTERNATE 1 FUTURE RESTROOM UTILITY STUBS

N.T.S.

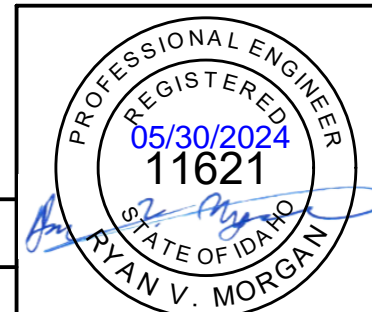
RIVER HOUSE PARKING

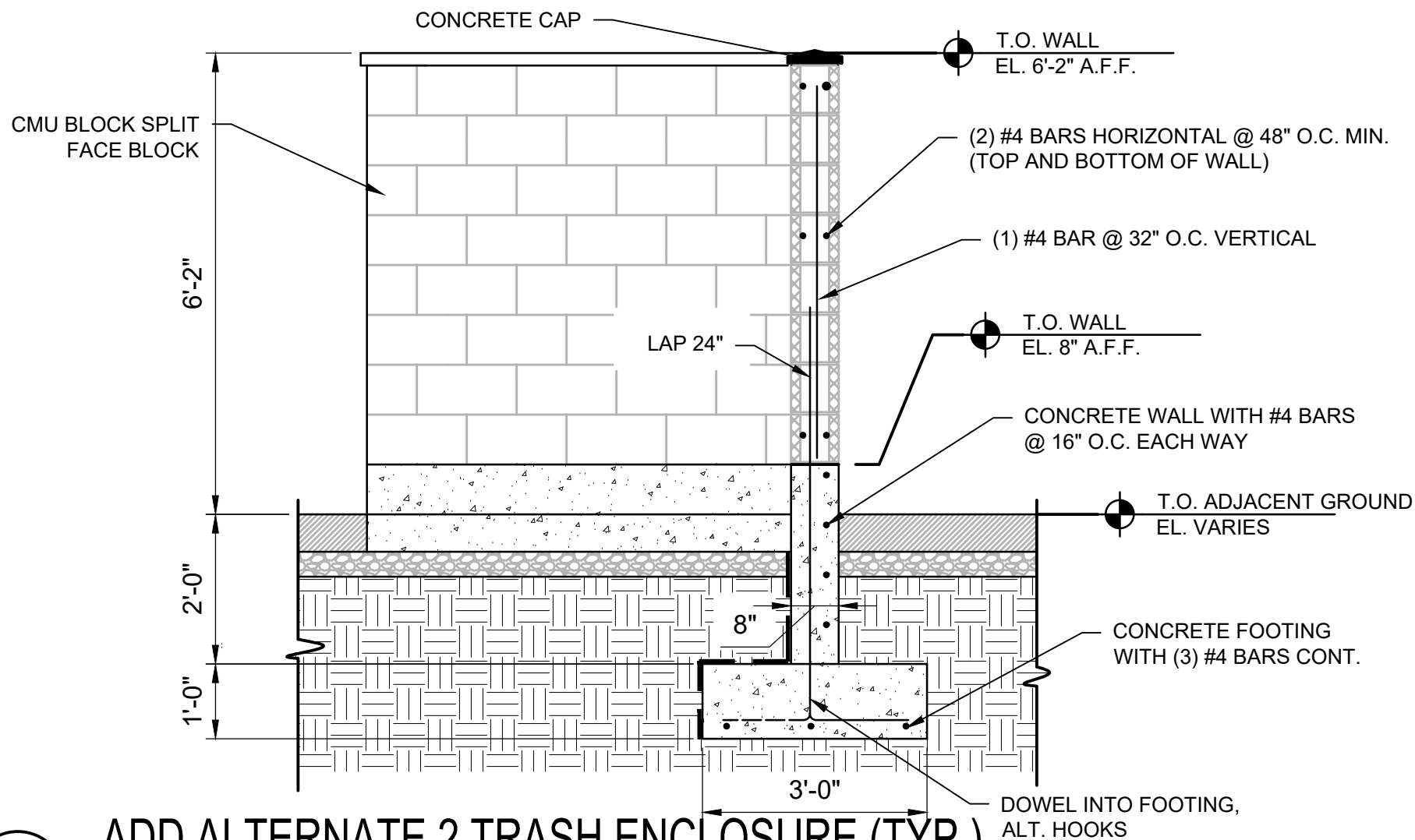
ADD ALTERNATE 1
SHEET 7 OF 8



SCALE:	1" = 30'
DATE:	05/29/24
DESIGNED BY:	RVM

REVISED





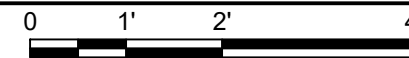
SHEET KEYNOTES

- 01 CONCRETE PAVEMENT 6" PAVEMENT ON 8" PIT RUN.
- 02 TRASH ENCLOSURE SEE DETAIL THIS PAGE.

A2

ADD ALTERNATE 2 TRASH ENCLOSURE (TYP.)

1/2" = 1'-0"



RIVER HOUSE PARKING

ADD ALTERNATE 2
SHEET 8 OF 8



SCALE:	1" = N/A	REVISED
DATE:	05/29/24	
DESIGNED BY:	RVM	

