















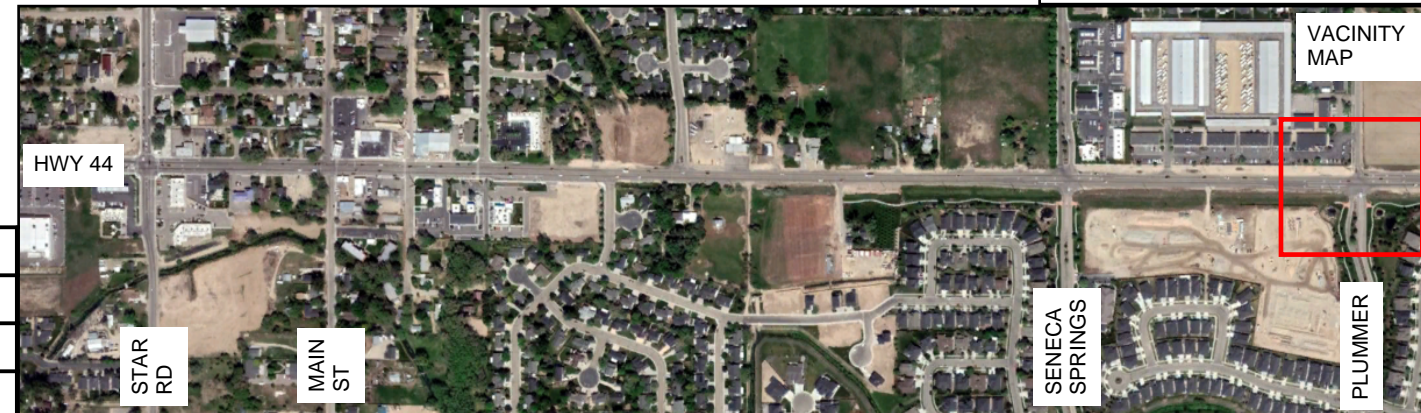
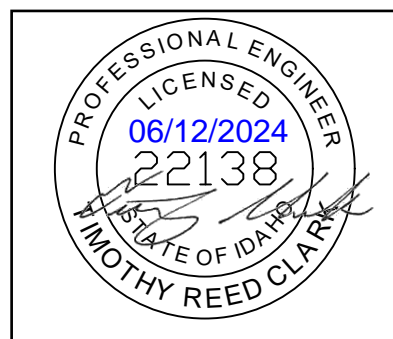
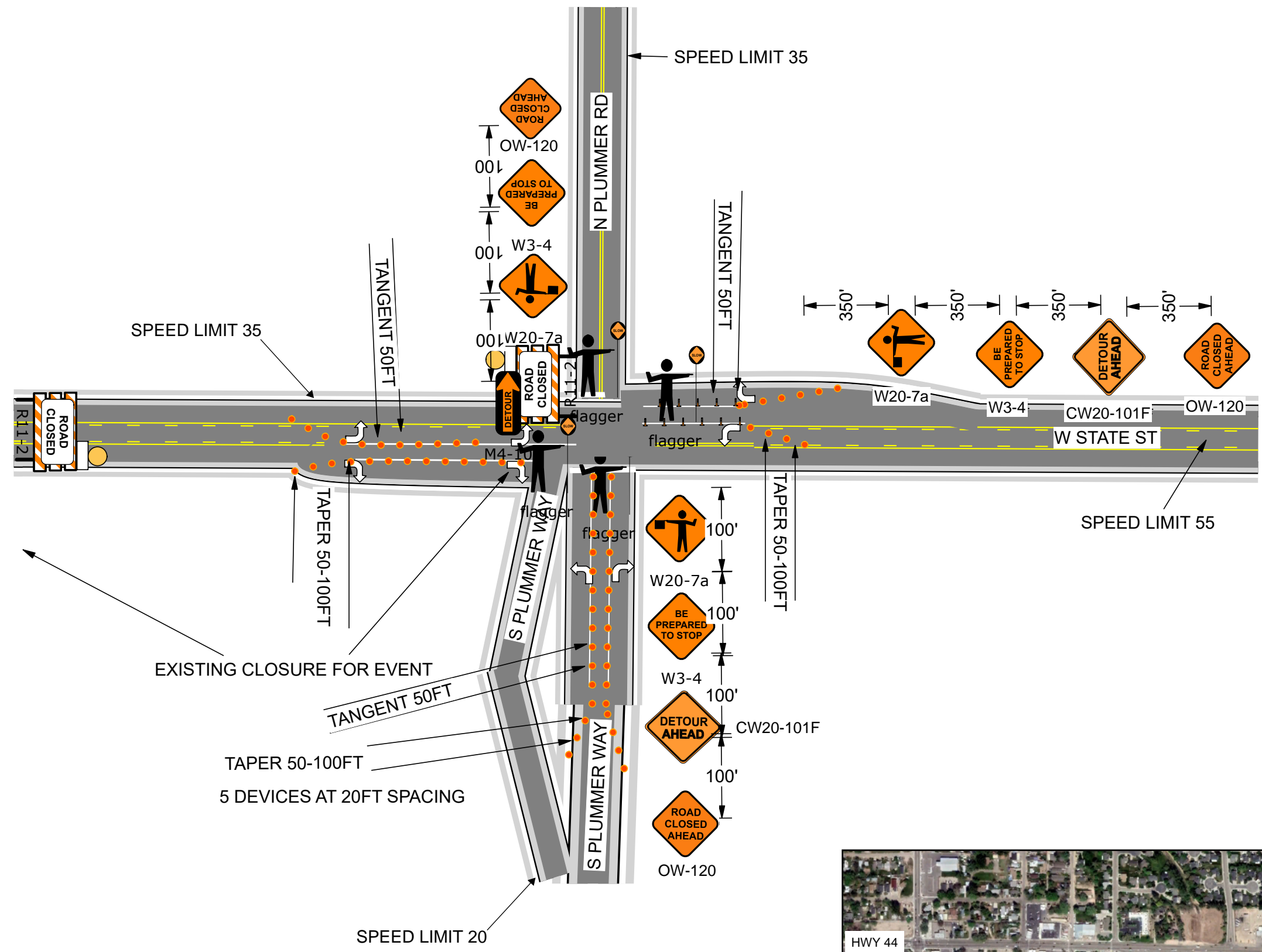


**Legend**

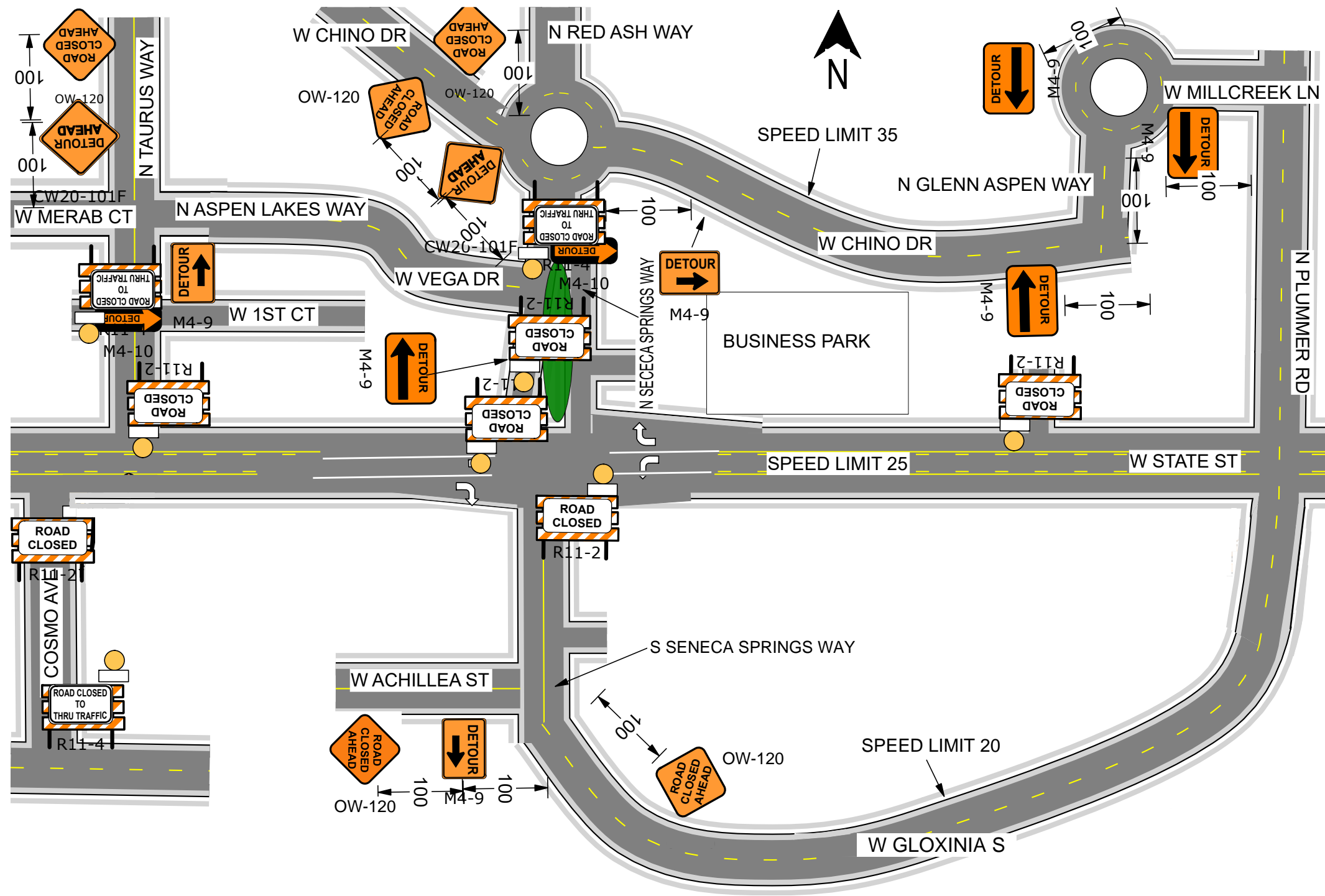
-  Barrel
-  Barrier TYPE III
-  DETOUR AHEAD
-  flagger flagger
-  M4-10 Detour M4-10L
-  M4-10 M4-10
-  M4-9 detour (L)
-  M4-9 detour (R)
-  R11-2 ROAD CLOSED
-  R11-4 R11-4 road closed to thru traffic
-  ROAD CLOSED AHEAD
-  SPECIAL EVENT AHEAD
-  Tubular
-  W20-7a flagger
-  W23-1 slow traffic ahead
-  W3-4 be prepared to stop



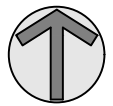
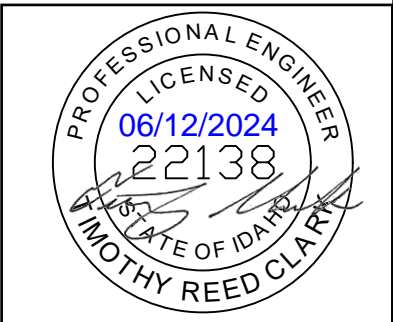
**HOMETOWN PARADE  
TRAFFIC CONTROL PLAN  
HWY 44 - PLUMMER RD**  
Sheet 1 of 8



SCALE:	N/A
DATE:	06/12/2024
DESIGNED BY:	TRC
CHECKED BY:	



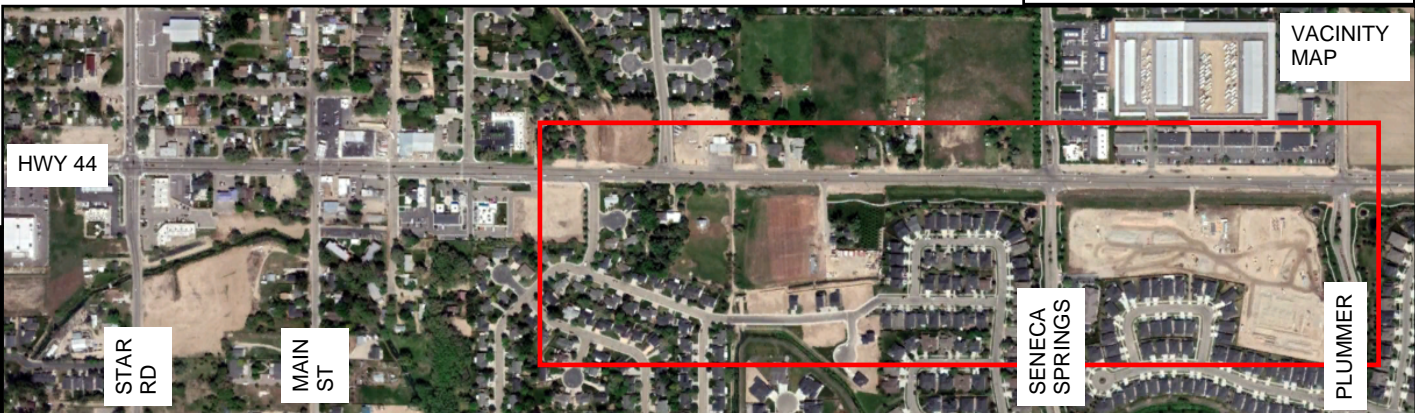
SEE SHEET 1 FOR W STATE ST/PLUMMER TRAFFIC CONTROL

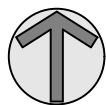
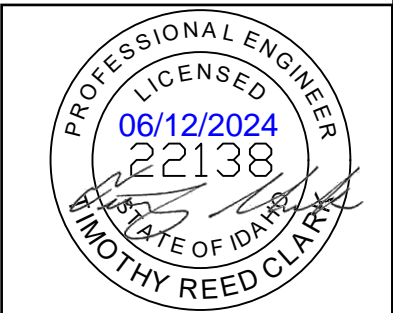
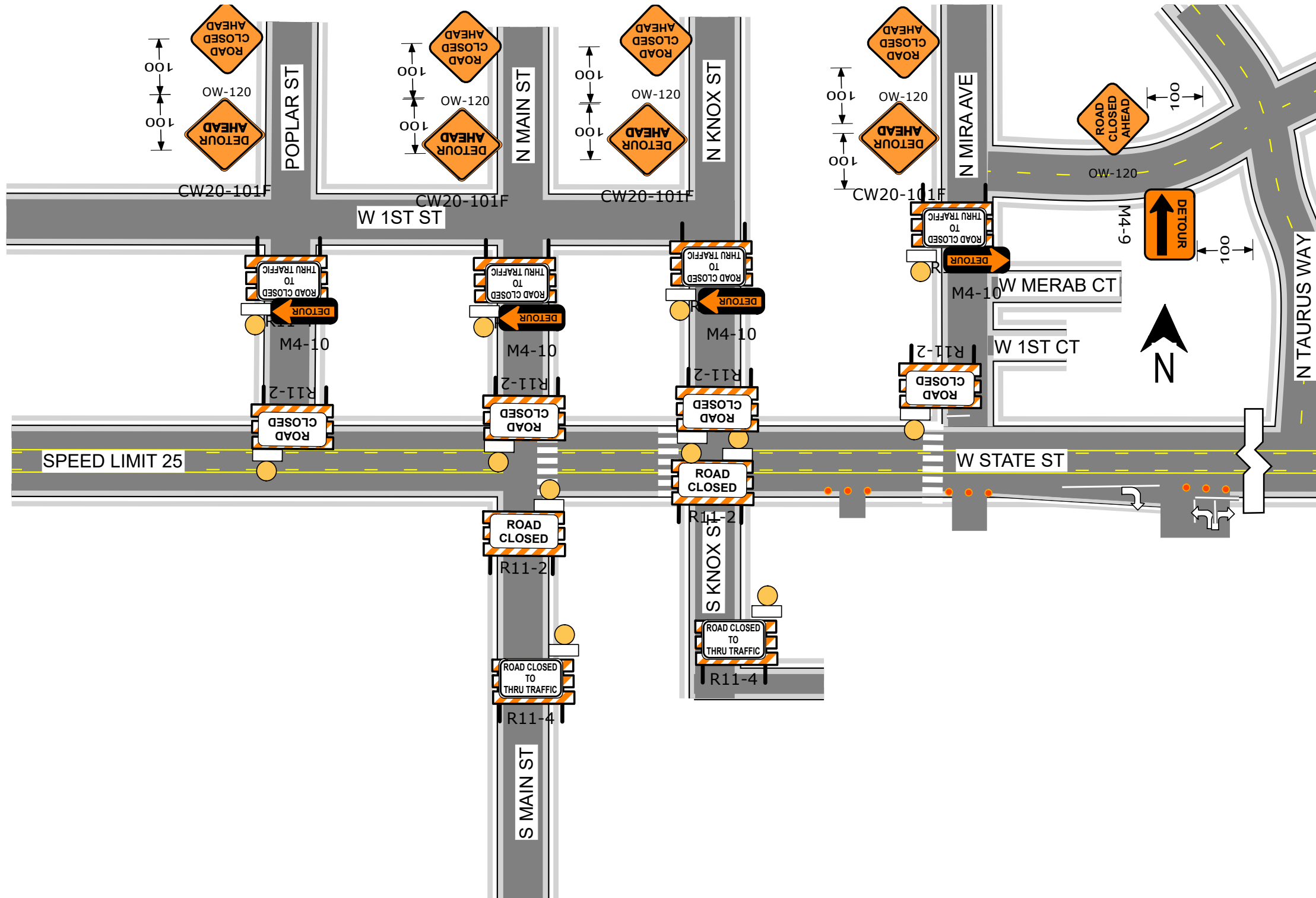


**HOMETOWN PARADE  
TRAFFIC CONTROL PLAN  
HWY 44 - COSMO TO PLUMMER**  
Sheet 2 of 8



SCALE:	N/A
DATE:	06/12/2024
DESIGNED BY:	TRC
CHECKED BY:	





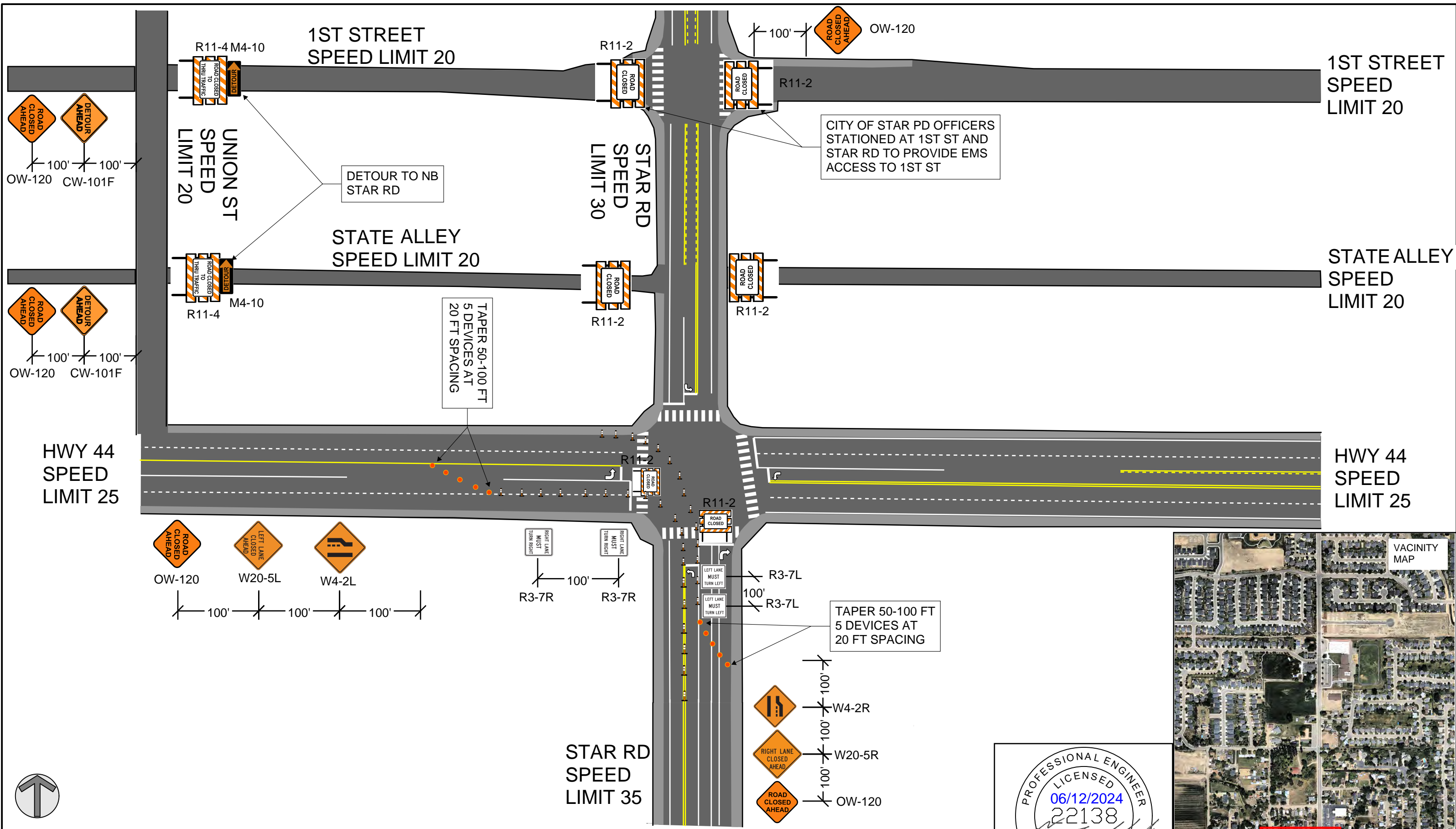
**HOMETOWN PARADE  
TRAFFIC CONTROL PLAN  
HWY 44 - POPLAR TO TAURUS**  
Sheet 3 of 8



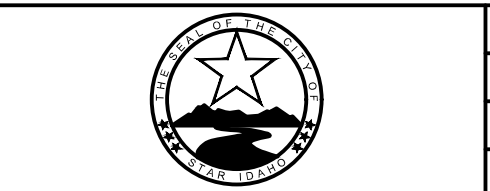
SCALE: N/A  
DATE: 06/12/2024  
DESIGNED BY: TRC  
CHECKED BY:



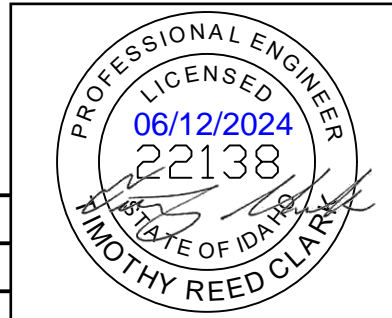
VACINITY  
MAP

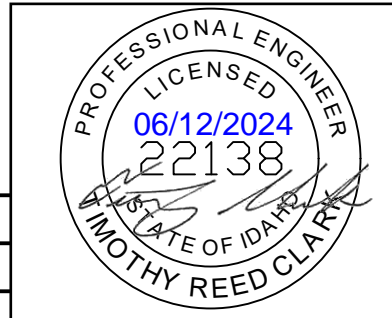
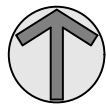
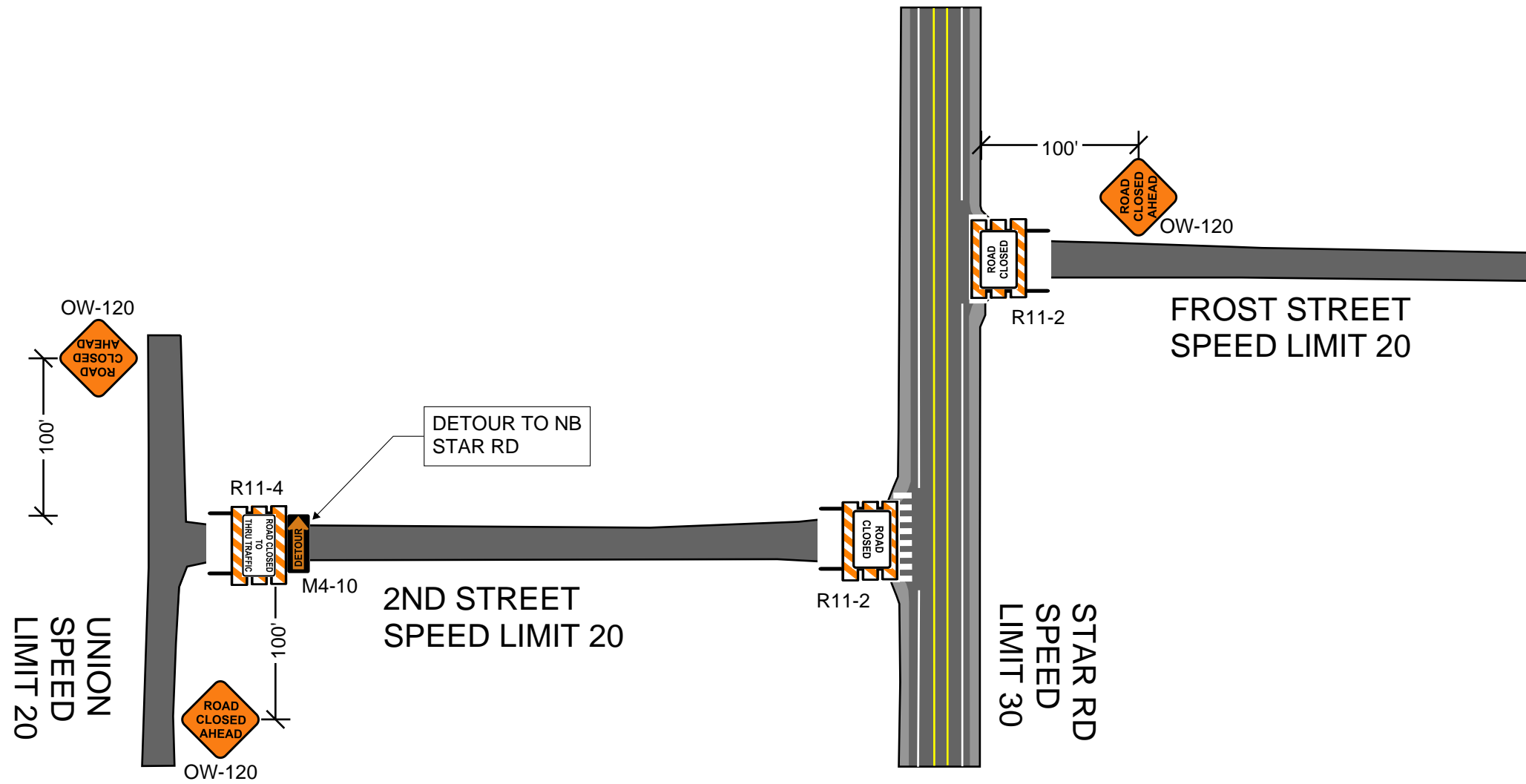


**HOMETOWN PARADE  
TRAFFIC CONTROL PLAN  
STAR RD - HWY 44 TO 1ST ST**  
Sheet 4 of 8



SCALE:	N/A	REVISED
DATE:	06/12/2024	
DESIGNED BY:	TRC	
CHECKED BY:		

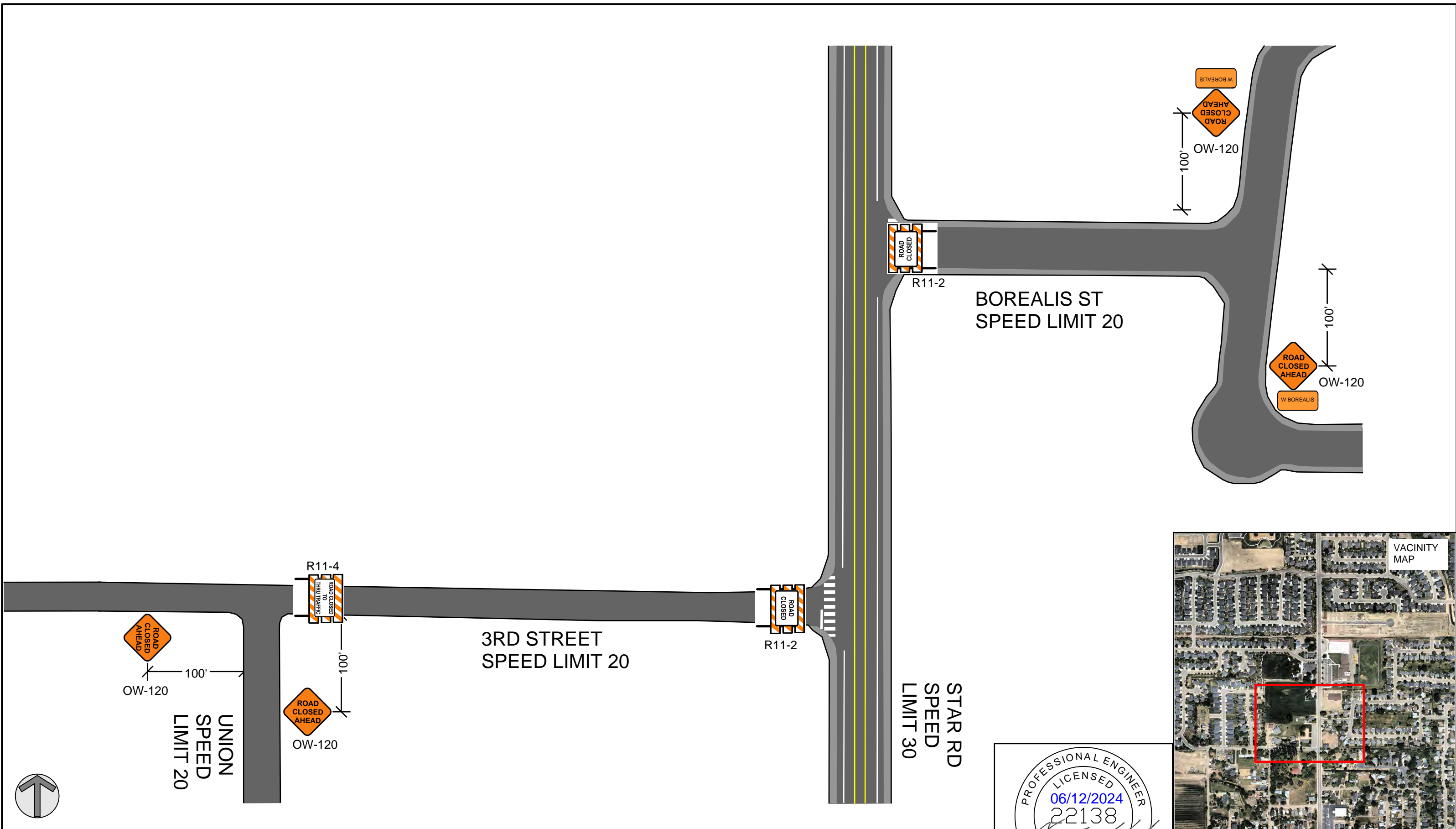




HOMETOWN PARADE  
TRAFFIC CONTROL PLAN  
STAR RD - 2ND ST TO FROST ST  
Sheet 5 of 8



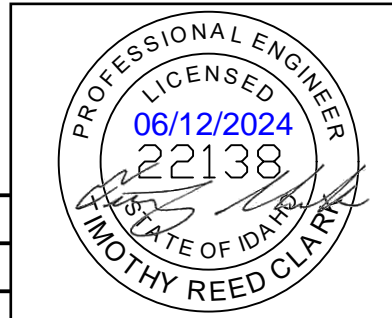
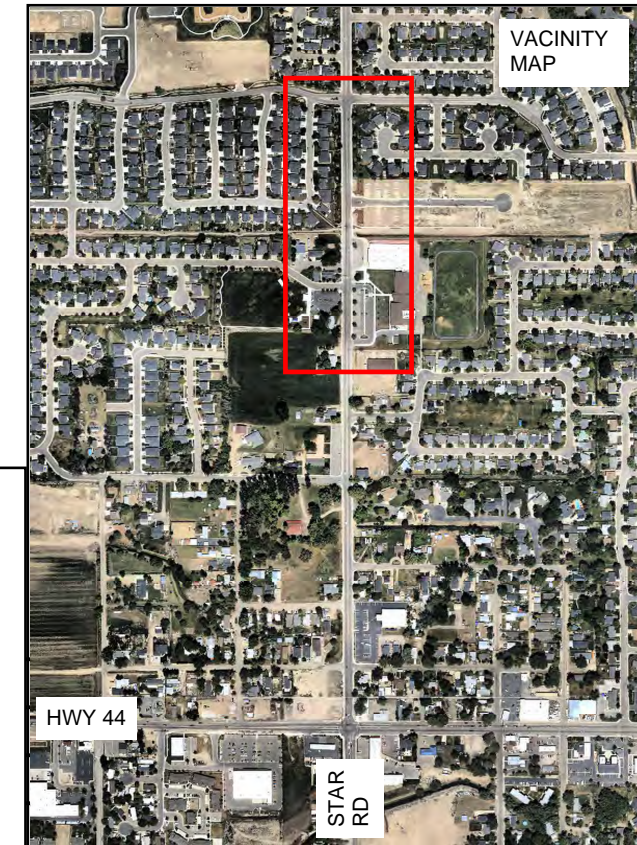
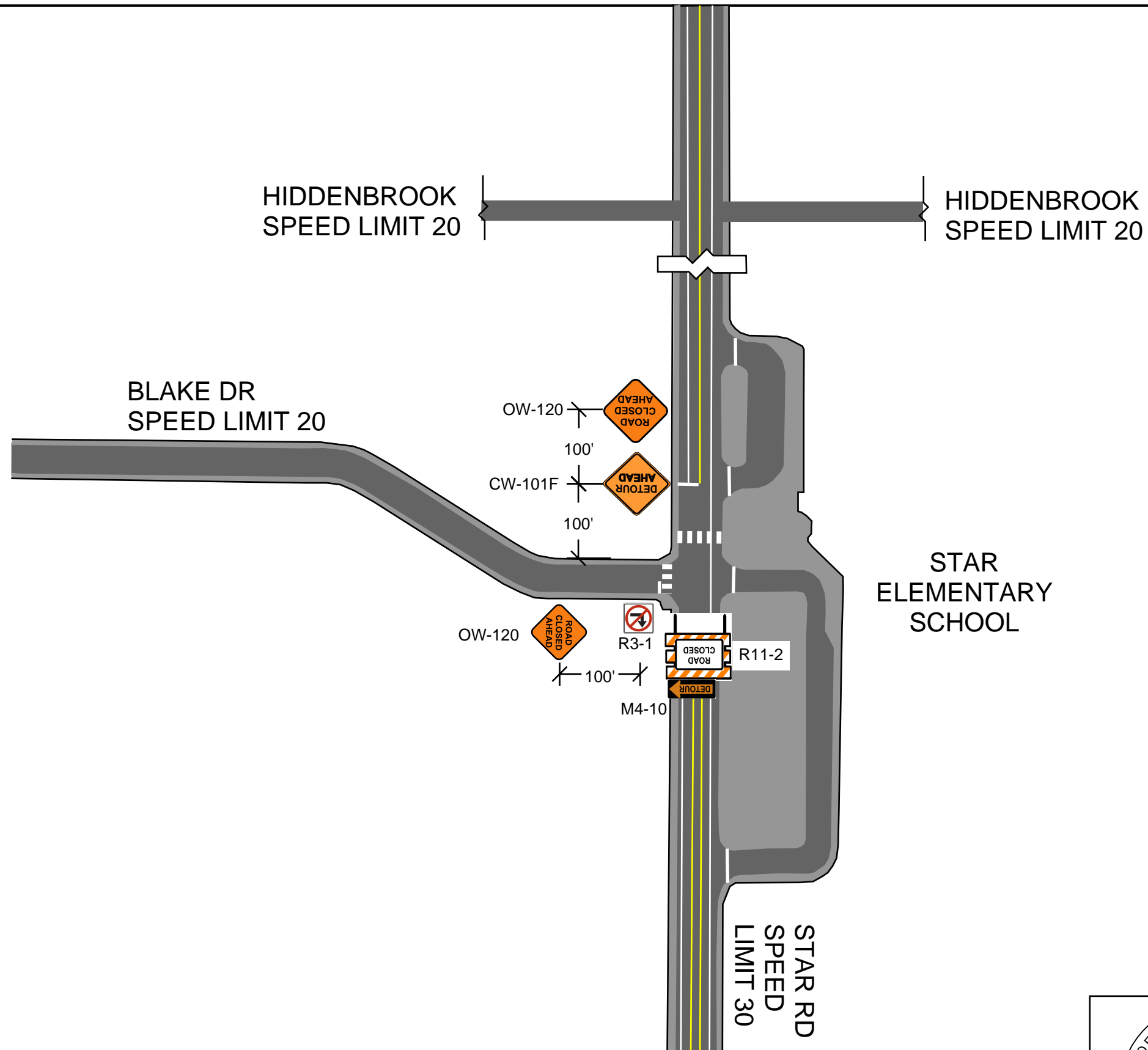
SCALE:	N/A	REVISED
DATE:	06/12/2024	
DESIGNED BY:	TRC	
CHECKED BY:		



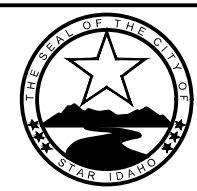
HOMETOWN PARADE  
TRAFFIC CONTROL PLAN  
STAR RD - 3RD ST TO BOREALIS  
Sheet 6 of 8



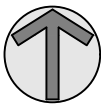
SCALE:	N/A	REVISED
DATE:	06/12/2024	
DESIGNED BY:	TRC	
CHECKED BY:		



**HOMETOWN PARADE  
TRAFFIC CONTROL PLAN**  
STAR RD - BLAKE TO HIDDENBROOK  
Sheet 7 of 8



SCALE:	N/A	REVISED
DATE:	06/12/2024	
DESIGNED BY:	TRC	
CHECKED BY:		



HWY 44 WB  
DETOUR  
W23-1  
M4-9

HWY 44 EB  
DETOUR  
W23-1  
M4-9

W23-1  
M4-9  
DETOUR  
HWY 44 EB

HWY 44 WB  
DETOUR  
W23-1  
M4-9

HWY 44 WB  
DETOUR  
W23-1  
M4-9

100' ROAD CLOSED AHEAD OW-120

100' ROAD CLOSED AHEAD OW-120

CAN ADA RD

MUNGER RD

W FLOATING FEATHER RD

OW-120

100' ROAD CLOSED AHEAD R11-4

HWY 44 EB  
DETOUR  
W23-1  
M4-9

HWY 44 WB  
DETOUR  
W23-1  
M4-9

N PLUMMER RD

W23-1  
M4-9  
DETOUR  
HWY 44 EB

W23-1  
M4-9  
DETOUR  
HWY 44 WB

PARADE ROUTE

W23-1  
M4-9  
DETOUR  
HWY 44 WB

W23-1  
M4-9  
DETOUR  
HWY 44 EB

W23-1  
M4-9  
DETOUR  
HWY 44 WB

W23-1  
M4-9  
DETOUR  
HWY 44 EB

W23-1  
M4-9  
DETOUR  
HWY 44 WB

W23-1  
M4-9

500' ROAD CLOSED AHEAD OW-120  
500' ROAD CLOSED AHEAD CW-101F  
W23-1  
M4-9  
DETOUR  
HWY 44 EB

100' HWY 44 EB  
DETOUR  
W23-1  
M4-9  
DETOUR AHEAD  
CW-101F

100' HWY 44 EB  
DETOUR  
W23-1  
M4-9  
DETOUR AHEAD  
CW-101F

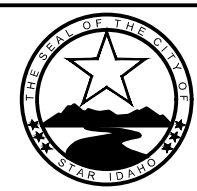
100' HWY 44 EB  
DETOUR  
W23-1  
M4-9  
DETOUR AHEAD  
CW-101F  
S SUNLIGHT

W STATE ST

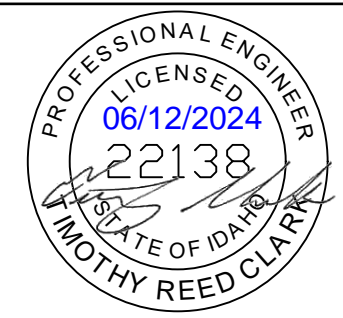
W STATE ST

S STAR RD

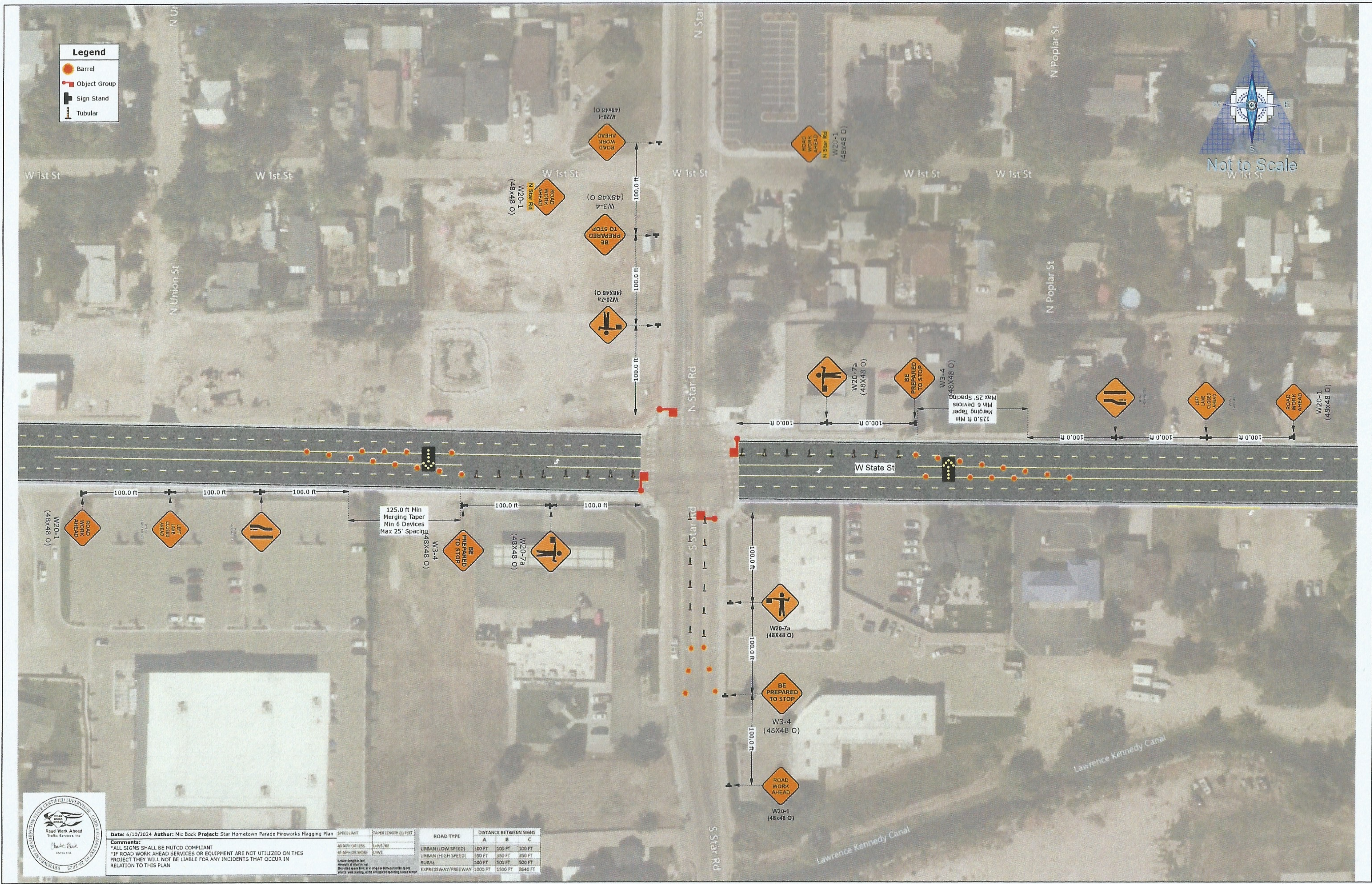
HOMETOWN PARADE  
TRAFFIC CONTROL PLAN  
EB/WB HWY 44 DETOUR  
Sheet 8 of 8



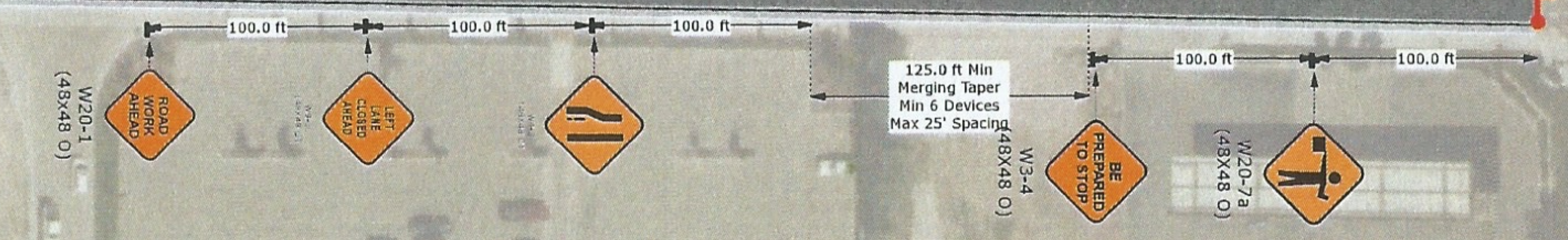
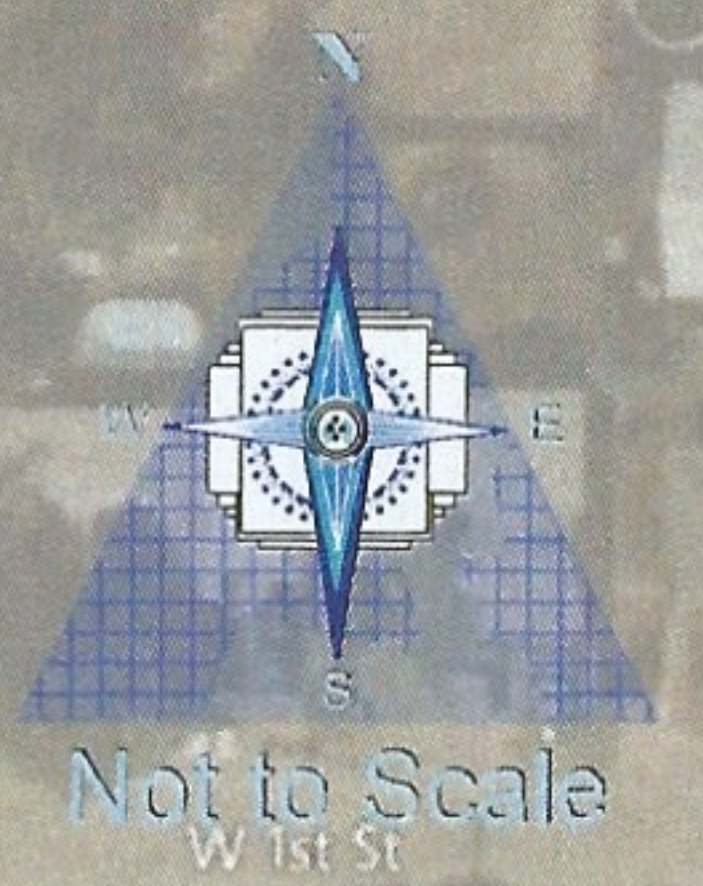
SCALE:	N/A	REVISED
DATE:	06/12/2024	
DESIGNED BY:	TRC	
CHECKED BY:		







- Legend**
- Barrel
  - Object Group
  - Sign Stand
  - Tubular

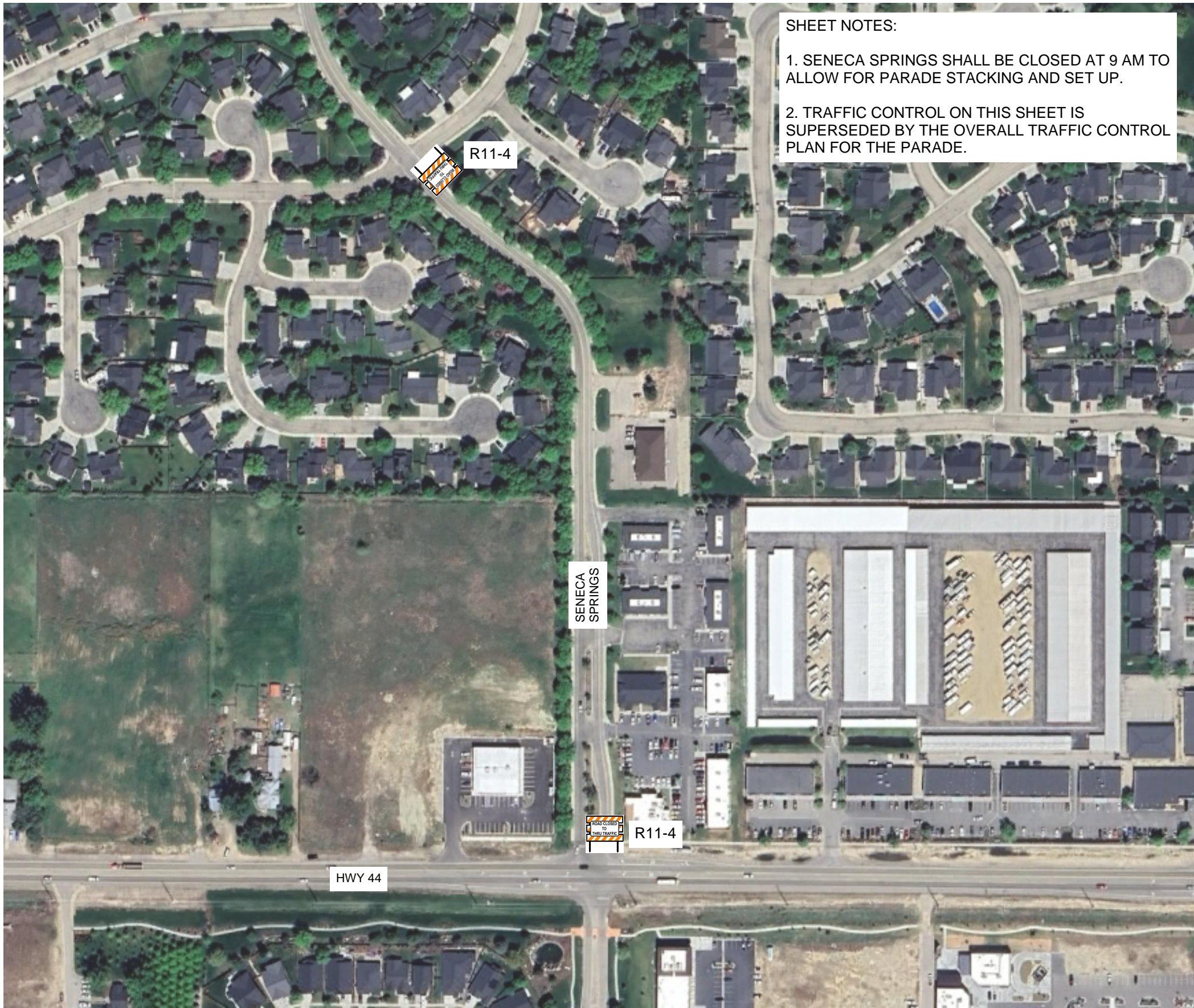


Date: 6/10/2024 Author: Mic Bock Project: Star Hometown Parade Fireworks Flagging Plan

**Comments:**  
 \*ALL SIGNS SHALL BE MUTCD COMPLIANT  
 \*IF ROAD WORK AHEAD SERVICES OR EQUIPMENT ARE NOT UTILIZED ON THIS PROJECT THEY WILL NOT BE LIABLE FOR ANY INCIDENTS THAT OCCUR IN RELATION TO THIS PLAN

ROAD TYPE	DISTANCE BETWEEN SIGNS		
	A	B	C
URBAN (LOW SPEED)	100 FT	100 FT	100 FT
URBAN (HIGH SPEED)	350 FT	350 FT	350 FT
RURAL	500 FT	500 FT	500 FT
EXPRESSWAY/FREELWAY	1500 FT	1500 FT	3040 FT





**SHEET NOTES:**

1. SENECA SPRINGS SHALL BE CLOSED AT 9 AM TO ALLOW FOR PARADE STACKING AND SET UP.
2. TRAFFIC CONTROL ON THIS SHEET IS SUPERSEDED BY THE OVERALL TRAFFIC CONTROL PLAN FOR THE PARADE.

**HOMETOWN PARADE  
TRAFFIC CONTROL PLAN  
SENECA SPRINGS CLOSURE**

SHEET 1 OF 1



SCALE:	N/A
DATE:	05/28/2024
DESIGNED BY:	TRC
CHECKED BY:	

REVISED

